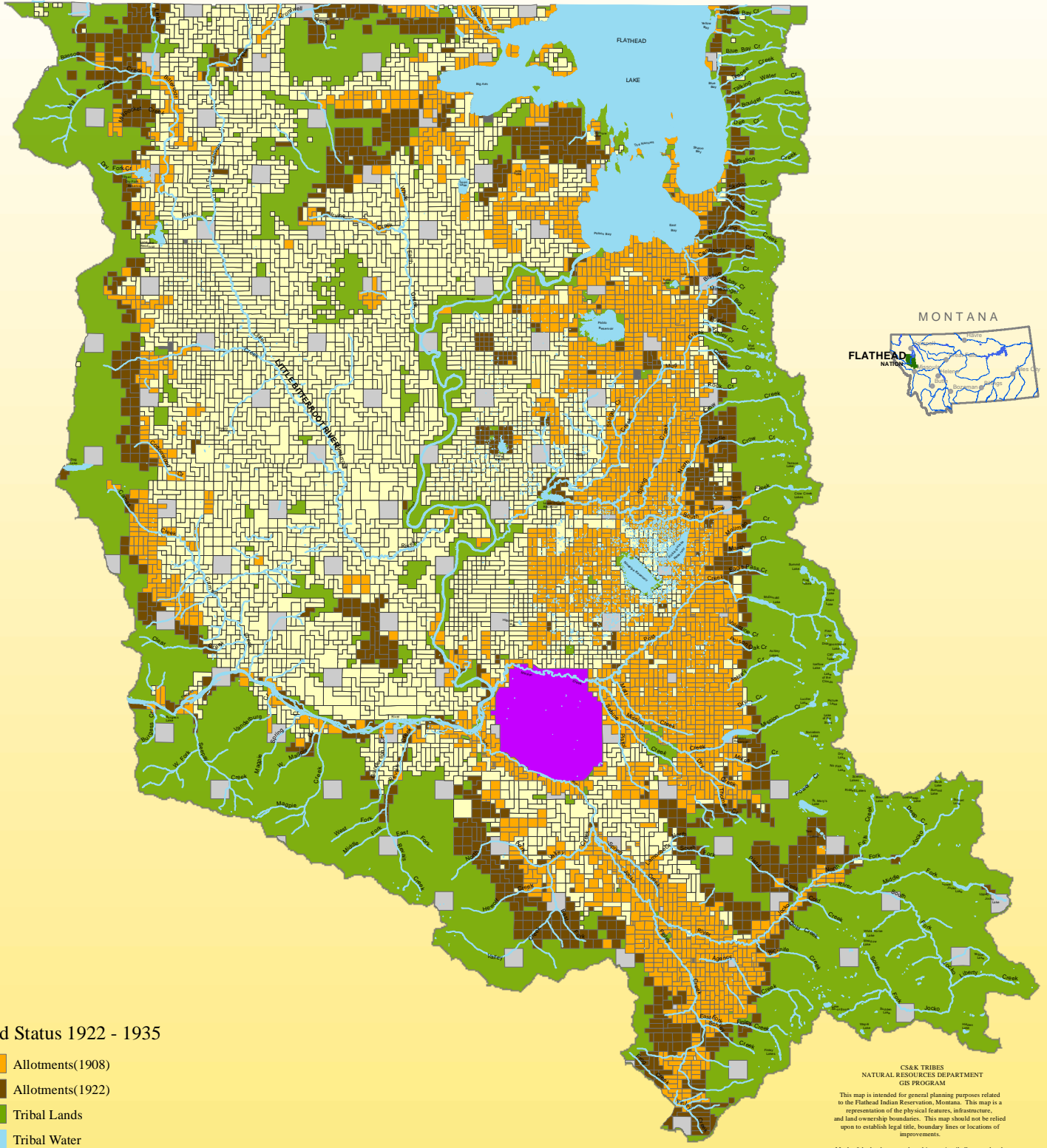
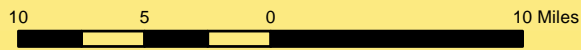


# THE CONFEDERATED SALISH & KOOTENAI TRIBES OF THE FLATHEAD NATION



## Land Status 1922 - 1935

- Allotments(1908)
- Allotments(1922)
- Tribal Lands
- Tribal Water
- Homesteads (1910)
- National Bison Range
- Townsite
- State



CS&K TRIBES  
NATURAL RESOURCES DEPARTMENT  
GIS PROGRAM

This map is intended for general planning purposes related to the Flathead Indian Reservation, Montana. This map is a representation of the physical features, infrastructure, and land ownership boundaries. This map should not be relied upon to establish legal title, boundary lines or locations of improvements.

Much of the land portrayed on this map is tribally owned and is closed or has restricted entry and travel rules. Please observe all tribal, local, and agency regulations/ordinances.

This map was created from records and existing map sources, not from field surveys. Actual land status is maintained by the Confederated Salish & Kootenai Tribes, Titles and Records Dept., Montana.

Copyright (c) 1993, 2018 CS&K Tribes Natural Resources Department. All rights reserved.