

Flathead River Streamflow at Perma USGS Gage #12388700 Compared to CSKT Compact

June 2023

CSKT Compact Daily Flow Requirements as specified in Appendix 12 Abstract # 76L 30052864													USGS Provisional Data - Discharge CFS (Mean)				
Date	Jan	Feb	Mar	Apr	May	Jun	Jul	Aug	Sep	Oct	Nov	Dec	Gage	Date	CFS	Excess (Shortfall)	
1	3,574	3,586	3,599	4,314	11,983	14,462	8,145	3,660	3,733	3,758	3,665	3,546	USGS	12388700	6/1/2023	15,000	538
2	3,574	3,586	3,599	4,314	11,983	14,462	8,145	3,660	3,733	3,758	3,665	3,546	USGS	12388700	6/2/2023	14,600	138
3	3,574	3,586	3,599	4,314	11,983	14,462	8,145	3,660	3,733	3,758	3,665	3,546	USGS	12388700	6/3/2023	14,300	-162
4	3,574	3,586	3,599	4,314	11,983	14,462	8,145	3,660	3,733	3,758	3,665	3,546	USGS	12388700	6/4/2023	13,700	-762
5	3,574	3,586	3,599	4,314	11,983	14,462	8,145	3,660	3,733	3,758	3,665	3,546	USGS	12388700	6/5/2023	13,600	-862
6	3,574	3,586	3,599	4,314	11,983	14,462	8,145	3,660	3,733	3,758	3,665	3,546	USGS	12388700	6/6/2023	13,500	-962
7	3,574	3,586	3,599	4,314	11,983	14,462	8,145	3,660	3,733	3,758	3,665	3,546	USGS	12388700	6/7/2023	13,400	-1,062
8	3,574	3,586	3,599	4,314	11,983	14,462	8,145	3,660	3,733	3,758	3,665	3,546	USGS	12388700	6/8/2023	13,400	-1,062
9	3,574	3,586	3,599	4,314	11,983	14,462	8,145	3,660	3,733	3,758	3,665	3,546	USGS	12388700	6/9/2023	13,500	-962
10	3,574	3,586	3,599	4,314	11,983	14,462	8,145	3,660	3,733	3,758	3,665	3,546	USGS	12388700	6/10/2023	13,600	-862
11	3,574	3,586	3,599	4,314	11,983	14,462	8,145	3,660	3,733	3,758	3,665	3,546	USGS	12388700	6/11/2023	13,700	-762
12	3,574	3,586	3,599	4,314	11,983	14,462	8,145	3,660	3,733	3,758	3,665	3,546	USGS	12388700	6/12/2023	13,700	-762
13	3,574	3,586	3,599	4,314	11,983	14,462	8,145	3,660	3,733	3,758	3,665	3,546	USGS	12388700	6/13/2023	13,700	-762
14	3,574	3,586	3,599	4,314	11,983	14,462	8,145	3,660	3,733	3,758	3,665	3,546	USGS	12388700	6/14/2023	13,700	-762
15	3,574	3,586	3,599	4,314	11,983	14,462	8,145	3,660	3,733	3,758	3,665	3,546	USGS	12388700	6/15/2023	13,600	-862
16	3,574	3,586	3,599	4,314	11,983	14,462	8,145	3,660	3,733	3,758	3,665	3,546	USGS	12388700	6/16/2023	13,800	-662
17	3,574	3,586	3,599	4,314	11,983	14,462	8,145	3,660	3,733	3,758	3,665	3,546	USGS	12388700	6/17/2023	13,600	-862
18	3,574	3,586	3,599	4,314	11,983	14,462	8,145	3,660	3,733	3,758	3,665	3,546	USGS	12388700	6/18/2023	13,500	-962
19	3,574	3,586	3,599	4,314	11,983	14,462	8,145	3,660	3,733	3,758	3,665	3,546	USGS	12388700	6/19/2023	13,500	-962
20	3,574	3,586	3,599	4,314	11,983	14,462	8,145	3,660	3,733	3,758	3,665	3,546	USGS	12388700	6/20/2023	13,600	-862
21	3,574	3,586	3,599	4,314	11,983	14,462	8,145	3,660	3,733	3,758	3,665	3,546	USGS	12388700	6/21/2023	13,400	-1,062
22	3,574	3,586	3,599	4,314	11,983	14,462	8,145	3,660	3,733	3,758	3,665	3,546	USGS	12388700	6/22/2023	13,100	-1,362
23	3,574	3,586	3,599	4,314	11,983	14,462	8,145	3,660	3,733	3,758	3,665	3,546	USGS	12388700	6/23/2023	13,000	-1,462
24	3,574	3,586	3,599	4,314	11,983	14,462	8,145	3,660	3,733	3,758	3,665	3,546	USGS	12388700	6/24/2023	13,000	-1,462
25	3,574	3,586	3,599	4,314	11,983	14,462	8,145	3,660	3,733	3,758	3,665	3,546	USGS	12388700	6/25/2023	13,000	-1,462
26	3,574	3,586	3,599	4,314	11,983	14,462	8,145	3,660	3,733	3,758	3,665	3,546					
27	3,574	3,586	3,599	4,314	11,983	14,462	8,145	3,660	3,733	3,758	3,665	3,546					
28	3,574	3,586	3,599	4,314	11,983	14,462	8,145	3,660	3,733	3,758	3,665	3,546					
29	3,574	3,586	3,599	4,314	11,983	14,462	8,145	3,660	3,733	3,758	3,665	3,546					
30	3,574		3,599	4,314	11,983	14,462	8,145	3,660	3,733	3,758	3,665	3,546					
31	3,574		3,599		10,702		8,145	3,660		3,758		3,546					

Figures are noted in Cubic Feet per Second (CFS). One cubic feet of water per second is the equivalent of 724 acre feet per year, or enough water to cover 724 acres of land with 1 foot of water for an entire year.

Data Sources:

Flathead River Appendix 12 Abstract 76L 30052864

USGS Statistics for Flathead River ant Perma Gage #12388700 (no gage specified in Appendix 12 Water Rights Abstract)

STATE OF MONTANA
 DEPARTMENT OF NATURAL RESOURCES AND CONSERVATION

1424 9TH AVENUE P.O.BOX 201601 HELENA, MONTANA 59620-1601

GENERAL ABSTRACT

Water Right Number: 76L 30052864 COMPACT
Version: 1 – ORIGINAL RIGHT

Version Status:

Owners: USA (DEPT OF INTERIOR BUREAU OF INDIAN AFF)
 IN TRUST FOR CONFEDERATED SALISH & KOOTENAI TRIBES
 OF THE FLATHEAD INDIAN RESERVATION, MONTANA
 911 NE 11TH AVENUE
 PORTLAND, OR 97232-4169

ALL COMMUNICATION SHALL BE COPIED TO THE CSKT TRIBAL CHAIRMAN AS THE BENEFICIAL OWNER AT PO BOX 278, PABLO, MT 59855-0278.

Priority Date: TIME IMMEMORIAL
Purpose (use): FISH AND WILDLIFE
Maximum Flow Rate: 14,462.00 CFS

THE MEASUREMENT POINT FOR THIS WATER RIGHT SHALL BE WITHIN FLATHEAD RIVER (NESE SEC 6 T18N R24W) (LAT 47° 20' 39.79" N LONG 114° 42' 4.25" W). THE ADMINISTRATION POINT SHALL BE ADDED TO THIS WATER RIGHT UPON COMPLETION OF THE PROCESS SET FORTH IN ARTICLE III.C.1.d.iii OF THE WATER RIGHTS COMPACT.

Maximum Volume:

Source Name: FLATHEAD RIVER
Source Type: SURFACE WATER

Point of Diversion and Means of Diversion:

<u>ID</u>	<u>Govt Lot</u>	<u>Qtr Sec</u>	<u>Sec</u>	<u>Twp</u>	<u>Rge</u>	<u>County</u>	
1		NESE	6	18N	24W	SANDERS	
Period of Diversion:							
	JANUARY 1 TO JANUARY 31					Flow Rate:	3,574.00 CFS
	FEBRUARY 1 TO FEBRUARY 28					Flow Rate:	3,586.00 CFS
	MARCH 1 TO MARCH 31					Flow Rate:	3,599.00 CFS
	APRIL 1 TO APRIL 30					Flow Rate:	4,314.00 CFS
	MAY 1 TO MAY 31					Flow Rate:	11,973.00 CFS
	JUNE 1 TO JUNE 30					Flow Rate:	14,462.00 CFS
	JULY 1 TO JULY 31					Flow Rate:	8,145.00 CFS
	AUGUST 1 TO AUGUST 31					Flow Rate:	3,660.00 CFS
	SEPTEMBER 1 TO SEPTEMBER 30					Flow Rate:	3,733.00 CFS
	OCTOBER 1 TO OCTOBER 31					Flow Rate:	3,758.00 CFS
	NOVEMBER 1 TO NOVEMBER 30					Flow Rate:	3,665.00 CFS
	DECEMBER 1 TO DECEMBER 31					Flow Rate:	3,546.00 CFS

Diversion Means: INSTREAM

Diversion Type: PRIMARY

THE POINT OF DIVERSION IS THE ADMINISTRATION POINT.

Period of Use: JANUARY 1 to DECEMBER 31

Place of Use:

<u>ID</u>	<u>Acres</u>	<u>Govt Lot</u>	<u>Qtr Sec</u>	<u>Sec</u>	<u>Twp</u>	<u>Rge</u>	<u>County</u>
1				4	18N	21W	LAKE
2				4	18N	21W	SANDERS
3				5	18N	21W	LAKE
4				5	18N	21W	SANDERS
5				8	18N	21W	SANDERS
6				17	18N	21W	SANDERS
7				18	18N	21W	SANDERS
8				9	18N	22W	SANDERS
9				10	18N	22W	SANDERS
10				11	18N	22W	SANDERS
11				12	18N	22W	SANDERS
12				13	18N	22W	SANDERS
13				16	18N	22W	SANDERS
14				17	18N	22W	SANDERS
15				18	18N	22W	SANDERS
16				3	18N	23W	SANDERS

Place of Use:

<u>ID</u>	<u>Acres</u>	<u>Govt Lot</u>	<u>Qtr Sec</u>	<u>Sec</u>	<u>Twp</u>	<u>Rge</u>	<u>County</u>
17				4	18N	23W	SANDERS
18				10	18N	23W	SANDERS
19				11	18N	23W	SANDERS
20				12	18N	23W	SANDERS
21				13	18N	23W	SANDERS
22				2	18N	24W	SANDERS
23				3	18N	24W	SANDERS
24				4	18N	24W	SANDERS
25				5	18N	24W	SANDERS
26				6	18N	24W	SANDERS
27				9	18N	24W	SANDERS
28				10	18N	24W	SANDERS
29				30	19N	21W	LAKE
30				30	19N	21W	SANDERS
31				31	19N	21W	LAKE
32				31	19N	21W	SANDERS
33				32	19N	21W	LAKE
34				32	19N	21W	SANDERS
35				1	19N	22W	LAKE
36				1	19N	22W	SANDERS
37				12	19N	22W	LAKE
38				12	19N	22W	SANDERS
39				13	19N	22W	LAKE
40				13	19N	22W	SANDERS
41				23	19N	22W	LAKE
42				23	19N	22W	SANDERS
43				24	19N	22W	LAKE
44				24	19N	22W	SANDERS
45				25	19N	22W	LAKE
46				25	19N	22W	SANDERS
47				31	19N	23W	SANDERS
48				32	19N	23W	SANDERS
49				33	19N	23W	SANDERS
50				35	19N	24W	SANDERS
51				36	19N	24W	SANDERS
52				17	20N	21W	LAKE
53				17	20N	21W	SANDERS
54				18	20N	21W	LAKE
55				18	20N	21W	SANDERS
56				20	20N	21W	SANDERS
57				21	20N	21W	LAKE
58				21	20N	21W	SANDERS
59				28	20N	21W	LAKE
60				28	20N	21W	SANDERS
61				29	20N	21W	LAKE
62				29	20N	21W	SANDERS
63				30	20N	21W	LAKE
64				30	20N	21W	SANDERS
65				31	20N	21W	LAKE
66				31	20N	21W	SANDERS
67				13	20N	22W	LAKE
68				13	20N	22W	SANDERS
69				36	20N	22W	LAKE
70				36	20N	22W	SANDERS

Remarks:

THE MAP DATA SOURCE FOR PLACE OF USE AND POINT OF DIVERSION FOR THIS WATER RIGHT ARE CONTAINED IN A GIS DATABASE FILE ENTITLED "CSKT-MT WATER RIGHTS COMPACT." THIS FILE MAY BE DOWNLOADED FROM THE MONTANA STATE LIBRARY (NRIS.MT.GOV) OR OBTAINED IN HARDCOPY FORM FROM THE OFFICE OF THE ENGINEER OF THE FLATHEAD RESERVATION WATER MANAGEMENT BOARD.

THIS IS A NONCONSUMPTIVE INSTREAM FLOW WATER RIGHT; THE PURPOSE AND INSTREAM PLACE OF USE CANNOT BE CHANGED.

Remarks:

PURSUANT TO ARTICLE III.C.1.D.III OF THE WATER RIGHTS COMPACT ENTERED INTO BY THE CONFEDERATED SALISH AND KOOTENAI TRIBES, THE STATE OF MONTANA, AND THE UNITED STATES OF AMERICA, THE TRIBES HAVE AN INSTREAM FLOW RIGHT FOR THE STREAM REACH IDENTIFIED IN THIS ABSTRACT. THE TRIBES SHALL DEFER THE ENFORCEMENT OF THIS RIGHT UNTIL AN ENFORCEABLE FLOW SCHEDULE FOR THAT RIGHT HAS BEEN ESTABLISHED PURSUANT TO THE PROCESS SET FORTH IN THE LAW OF ADMINISTRATION FOR THE DEVELOPMENT OF SUCH ENFORCEABLE SCHEDULE, WHICH CANNOT OCCUR UNTIL AFTER THE WATER COURT HAS ISSUED ITS FINAL DECREE FOR THE BASIN IN WHICH THIS WATER RIGHT IS LOCATED.

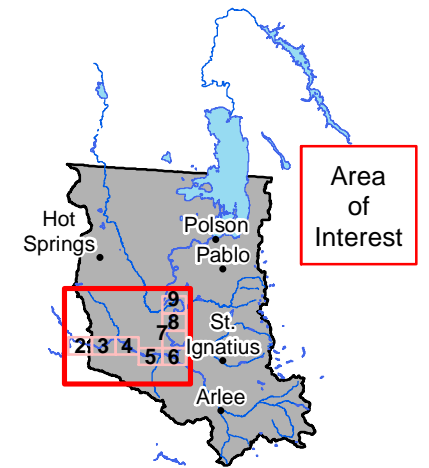
THE ENFORCEABLE LEVEL OF THIS WATER RIGHT SHALL BE AS DETERMINED BY THE PROCESS SET FORTH IN THE LAW OF ADMINISTRATION, THAT BODY OF LAWS ENACTED BY BOTH THE STATE AND THE TRIBES TO PROVIDE FOR THE ADMINISTRATION OF SURFACE AND GROUNDWATER WITHIN THE RESERVATION AS WELL AS THOSE WATERS THAT APPERTAIN TO THE OPERATION AND MAINTENANCE OF THE FIIP THAT HAVE BEEN DIVERTED OR TRANSPORTED ONTO THE RESERVATION FOR FIIP PURPOSES.

SEE 30052864 MAP EXHIBIT(S) 1 THROUGH 9.

THE EXERCISE OF THIS WATER RIGHT IS SUBJECT TO THE TERMS AND CONDITIONS OF THE WATER RIGHTS COMPACT ENTERED INTO BY THE CONFEDERATED SALISH AND KOOTENAI TRIBES, THE STATE OF MONTANA, AND THE UNITED STATES OF AMERICA.




THIS WATER RIGHT IS LOCATED IN WHOLE OR IN PART WITHIN THE EXTERIOR BOUNDARY OF THE FLATHEAD INDIAN RESERVATION.

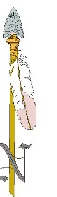
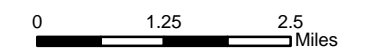
Place of Use
and Point of
Diversion
Instream Flow
Other Sites
76L
30052864
Exhibit 1



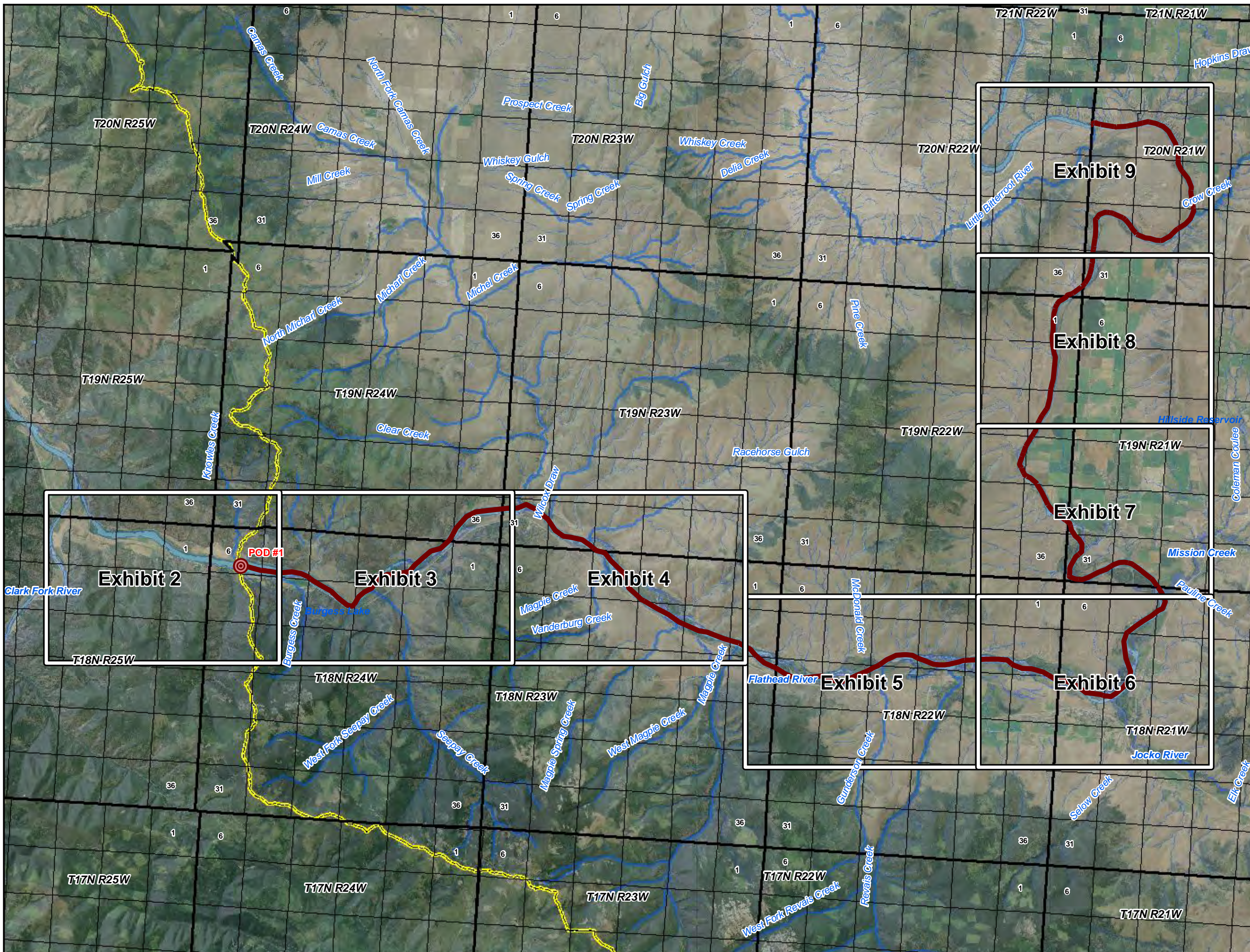
Flathead Indian Reservation

Legend

-  Place of Use
-  Primary Point(s) of Diversion
-  Reservation Boundary



POU/POD Data Source: CSKT-MT Compact Instream Flow
Other (available at nris.mt.gov)
Imagery Source: "Montana 2009 Color NAIP Orthophotos,
12-Kilometer Tiles" courtesy of USDA-Farm Services Agency,
Aerial Photography Field Office and the Montana State Library.
Hillshade created from: "National Elevation Dataset" courtesy of
U.S. Geological Survey (USGS), EROS Data Center
(1-arc second)



```
# ----- WARNING -----
# Some of the data that you have obtained from this U.S. Geological Survey database
# may not have received Director's approval. Any such data values are qualified
# as provisional and are subject to revision. Provisional data are released on the
# condition that neither the USGS nor the United States Government may be held liable
# for any damages resulting from its use.
#
# Additional info: https://help.waterdata.usgs.gov/policies/provisional-data-statement
#
# File-format description: https://help.waterdata.usgs.gov/faq/about-tab-delimited-output
# Automated-retrieval info: https://help.waterdata.usgs.gov/faq/automated-retrievals
#
# Contact: gs-w_waterdata_support@usgs.gov
# retrieved: 2023-06-26 10:57:02 EDT (vaww01)
#
```

```
# Data for the following 1 site(s) are contained in this file
# USGS 12388700 Flathead River at Perma MT
# -----
#
```

```
# Data provided for site 12388700
# TS parameter statistic Description
# 82149 00060 00003 Discharge, cubic feet per second (Mean)
#
```

```
# Data-value qualification codes included in this output:
# A Approved for publication -- Processing and review completed.
# P Provisional data subject to revision.
# e Value has been estimated.
#
```

agency_cd	site_no	datetime	82149_00060_00003	82149_00060_00003_cd
5s	15s	20d	14n	10s
USGS	12388700		2022-06-25	55200 A
USGS	12388700		2022-06-26	54600 A
USGS	12388700		2022-06-27	53600 A
USGS	12388700		2022-06-28	49900 A
USGS	12388700		2022-06-29	45100 A
USGS	12388700		2022-06-30	40000 A
USGS	12388700		2022-07-01	38700 A
USGS	12388700		2022-07-02	36200 A
USGS	12388700		2022-07-03	34800 A
USGS	12388700		2022-07-04	35500 A
USGS	12388700		2022-07-05	36400 A
USGS	12388700		2022-07-06	33000 A
USGS	12388700		2022-07-07	29600 A
USGS	12388700		2022-07-08	28100 A
USGS	12388700		2022-07-09	27200 A
USGS	12388700		2022-07-10	26900 A
USGS	12388700		2022-07-11	25200 A
USGS	12388700		2022-07-12	23000 A
USGS	12388700		2022-07-13	22400 A
USGS	12388700		2022-07-14	21800 A
USGS	12388700		2022-07-15	20900 A
USGS	12388700		2022-07-16	20600 A
USGS	12388700		2022-07-17	19000 A
USGS	12388700		2022-07-18	18800 A
USGS	12388700		2022-07-19	16900 A
USGS	12388700		2022-07-20	15500 A
USGS	12388700		2022-07-21	15100 A
USGS	12388700		2022-07-22	14300 A
USGS	12388700		2022-07-23	12900 A
USGS	12388700		2022-07-24	12500 A
USGS	12388700		2022-07-25	12600 A
USGS	12388700		2022-07-26	12500 A
USGS	12388700		2022-07-27	12400 A
USGS	12388700		2022-07-28	12400 A

USGS	12388700	2022-07-29	12000	A
USGS	12388700	2022-07-30	10700	A
USGS	12388700	2022-07-31	9450	A
USGS	12388700	2022-08-01	8690	A
USGS	12388700	2022-08-02	8080	A
USGS	12388700	2022-08-03	7630	A
USGS	12388700	2022-08-04	7600	A
USGS	12388700	2022-08-05	7430	A
USGS	12388700	2022-08-06	6930	A
USGS	12388700	2022-08-07	6950	A
USGS	12388700	2022-08-08	6930	A
USGS	12388700	2022-08-09	6790	A
USGS	12388700	2022-08-10	6250	A
USGS	12388700	2022-08-11	6140	A
USGS	12388700	2022-08-12	6000	A
USGS	12388700	2022-08-13	6020	A
USGS	12388700	2022-08-14	5930	A
USGS	12388700	2022-08-15	5940	A
USGS	12388700	2022-08-16	5960	A
USGS	12388700	2022-08-17	5930	A
USGS	12388700	2022-08-18	5900	A
USGS	12388700	2022-08-19	5920	A
USGS	12388700	2022-08-20	5900	A
USGS	12388700	2022-08-21	5940	A
USGS	12388700	2022-08-22	5910	A
USGS	12388700	2022-08-23	5910	A
USGS	12388700	2022-08-24	5900	A
USGS	12388700	2022-08-25	5980	A
USGS	12388700	2022-08-26	6010	A
USGS	12388700	2022-08-27	6000	A
USGS	12388700	2022-08-28	5940	A
USGS	12388700	2022-08-29	5940	A
USGS	12388700	2022-08-30	6640	A
USGS	12388700	2022-08-31	7410	A
USGS	12388700	2022-09-01	7940	A
USGS	12388700	2022-09-02	8790	A
USGS	12388700	2022-09-03	9660	A
USGS	12388700	2022-09-04	10000	A
USGS	12388700	2022-09-05	10000	A
USGS	12388700	2022-09-06	10100	A
USGS	12388700	2022-09-07	9940	A
USGS	12388700	2022-09-08	9160	A
USGS	12388700	2022-09-09	8340	A
USGS	12388700	2022-09-10	7660	A
USGS	12388700	2022-09-11	6950	A
USGS	12388700	2022-09-12	6010	A
USGS	12388700	2022-09-13	5200	A
USGS	12388700	2022-09-14	4900	A
USGS	12388700	2022-09-15	4490	A
USGS	12388700	2022-09-16	4430	A
USGS	12388700	2022-09-17	4390	A
USGS	12388700	2022-09-18	4380	A
USGS	12388700	2022-09-19	4440	A
USGS	12388700	2022-09-20	4410	A
USGS	12388700	2022-09-21	4400	A
USGS	12388700	2022-09-22	4620	A
USGS	12388700	2022-09-23	4720	A
USGS	12388700	2022-09-24	4590	A
USGS	12388700	2022-09-25	4530	A
USGS	12388700	2022-09-26	4510	A
USGS	12388700	2022-09-27	4530	A
USGS	12388700	2022-09-28	4550	A
USGS	12388700	2022-09-29	4580	A
USGS	12388700	2022-09-30	4610	A
USGS	12388700	2022-10-01	5220	A

USGS	12388700	2022-10-02	5740	A
USGS	12388700	2022-10-03	6190	A
USGS	12388700	2022-10-04	6600	A
USGS	12388700	2022-10-05	7330	A
USGS	12388700	2022-10-06	7530	A
USGS	12388700	2022-10-07	7570	A
USGS	12388700	2022-10-08	7580	A
USGS	12388700	2022-10-09	7580	A
USGS	12388700	2022-10-10	7630	A
USGS	12388700	2022-10-11	7630	A
USGS	12388700	2022-10-12	7630	A
USGS	12388700	2022-10-13	7610	A
USGS	12388700	2022-10-14	7670	A
USGS	12388700	2022-10-15	7660	A
USGS	12388700	2022-10-16	7640	A
USGS	12388700	2022-10-17	7640	A
USGS	12388700	2022-10-18	7640	A
USGS	12388700	2022-10-19	7680	A
USGS	12388700	2022-10-20	7690	A
USGS	12388700	2022-10-21	7530	A
USGS	12388700	2022-10-22	6760	A
USGS	12388700	2022-10-23	6080	A
USGS	12388700	2022-10-24	5310	A
USGS	12388700	2022-10-25	4920	A
USGS	12388700	2022-10-26	4380	A
USGS	12388700	2022-10-27	4340	A
USGS	12388700	2022-10-28	4320	A
USGS	12388700	2022-10-29	4310	A
USGS	12388700	2022-10-30	4300	A
USGS	12388700	2022-10-31	4300	A
USGS	12388700	2022-11-01	4280	A
USGS	12388700	2022-11-02	4090	A
USGS	12388700	2022-11-03	4090	A
USGS	12388700	2022-11-04	4430	A
USGS	12388700	2022-11-05	5140	A
USGS	12388700	2022-11-06	5570	A
USGS	12388700	2022-11-07	6030	A
USGS	12388700	2022-11-08	6630	A
USGS	12388700	2022-11-09	7400	A
USGS	12388700	2022-11-10	7680	A
USGS	12388700	2022-11-11	7770	A
USGS	12388700	2022-11-12	7720	A
USGS	12388700	2022-11-13	7670	A
USGS	12388700	2022-11-14	7710	A
USGS	12388700	2022-11-15	7770	A
USGS	12388700	2022-11-16	7730	A
USGS	12388700	2022-11-17	7780	A
USGS	12388700	2022-11-18	7740	A
USGS	12388700	2022-11-19	7630	A:e
USGS	12388700	2022-11-20	7270	A:e
USGS	12388700	2022-11-21	6870	A:e
USGS	12388700	2022-11-22	6830	A
USGS	12388700	2022-11-23	6870	A
USGS	12388700	2022-11-24	6940	A
USGS	12388700	2022-11-25	6840	A
USGS	12388700	2022-11-26	7100	A
USGS	12388700	2022-11-27	7140	A
USGS	12388700	2022-11-28	6880	A
USGS	12388700	2022-11-29	7010	A
USGS	12388700	2022-11-30	7750	A
USGS	12388700	2022-12-01	8460	A
USGS	12388700	2022-12-02	8380	A
USGS	12388700	2022-12-03	8430	A
USGS	12388700	2022-12-04	8430	A
USGS	12388700	2022-12-05	8680	A

USGS	12388700	2022-12-06	9230	A
USGS	12388700	2022-12-07	9190	A
USGS	12388700	2022-12-08	9140	A
USGS	12388700	2022-12-09	9090	A:e
USGS	12388700	2022-12-10	9200	A:e
USGS	12388700	2022-12-11	9210	A
USGS	12388700	2022-12-12	9210	A
USGS	12388700	2022-12-13	9230	A
USGS	12388700	2022-12-14	9280	A
USGS	12388700	2022-12-15	9330	A
USGS	12388700	2022-12-16	9330	A
USGS	12388700	2022-12-17	9250	A
USGS	12388700	2022-12-18	9250	A
USGS	12388700	2022-12-19	9210	A
USGS	12388700	2022-12-20	9280	A
USGS	12388700	2022-12-21	9290	A:e
USGS	12388700	2022-12-22	9020	A:e
USGS	12388700	2022-12-23	8900	A:e
USGS	12388700	2022-12-24	8670	A:e
USGS	12388700	2022-12-25	8680	A:e
USGS	12388700	2022-12-26	9000	A:e
USGS	12388700	2022-12-27	8900	A:e
USGS	12388700	2022-12-28	8890	A:e
USGS	12388700	2022-12-29	9220	A:e
USGS	12388700	2022-12-30	9250	A:e
USGS	12388700	2022-12-31	9040	A:e
USGS	12388700	2023-01-01	8760	A:e
USGS	12388700	2023-01-02	8470	A:e
USGS	12388700	2023-01-03	8230	A:e
USGS	12388700	2023-01-04	8020	A
USGS	12388700	2023-01-05	8000	A
USGS	12388700	2023-01-06	7990	A
USGS	12388700	2023-01-07	7960	A
USGS	12388700	2023-01-08	7950	A
USGS	12388700	2023-01-09	7950	A
USGS	12388700	2023-01-10	7960	A
USGS	12388700	2023-01-11	7930	A
USGS	12388700	2023-01-12	7950	A
USGS	12388700	2023-01-13	7950	A
USGS	12388700	2023-01-14	7970	A
USGS	12388700	2023-01-15	7980	A
USGS	12388700	2023-01-16	8030	A
USGS	12388700	2023-01-17	8000	A
USGS	12388700	2023-01-18	7980	A
USGS	12388700	2023-01-19	8030	A
USGS	12388700	2023-01-20	8010	A
USGS	12388700	2023-01-21	7980	A
USGS	12388700	2023-01-22	7990	A
USGS	12388700	2023-01-23	7980	A
USGS	12388700	2023-01-24	8240	A
USGS	12388700	2023-01-25	8190	A
USGS	12388700	2023-01-26	8220	A
USGS	12388700	2023-01-27	8200	A:e
USGS	12388700	2023-01-28	8110	A:e
USGS	12388700	2023-01-29	8080	A:e
USGS	12388700	2023-01-30	8830	A:e
USGS	12388700	2023-01-31	8880	A:e
USGS	12388700	2023-02-01	8900	A:e
USGS	12388700	2023-02-02	8860	A:e
USGS	12388700	2023-02-03	8810	A
USGS	12388700	2023-02-04	8850	A
USGS	12388700	2023-02-05	8870	A
USGS	12388700	2023-02-06	8930	A
USGS	12388700	2023-02-07	8920	A
USGS	12388700	2023-02-08	9010	A

USGS	12388700	2023-02-09	8920	A
USGS	12388700	2023-02-10	8890	A
USGS	12388700	2023-02-11	8920	A
USGS	12388700	2023-02-12	8900	A
USGS	12388700	2023-02-13	8950	A
USGS	12388700	2023-02-14	8970	A
USGS	12388700	2023-02-15	8970	A
USGS	12388700	2023-02-16	8950	A
USGS	12388700	2023-02-17	8960	A
USGS	12388700	2023-02-18	8960	A
USGS	12388700	2023-02-19	8970	A
USGS	12388700	2023-02-20	9000	A
USGS	12388700	2023-02-21	9090	A
USGS	12388700	2023-02-22	9010	A
USGS	12388700	2023-02-23	9000	A:e
USGS	12388700	2023-02-24	9340	A:e
USGS	12388700	2023-02-25	9190	A:e
USGS	12388700	2023-02-26	9080	A:e
USGS	12388700	2023-02-27	9100	A:e
USGS	12388700	2023-02-28	9060	A
USGS	12388700	2023-03-01	8820	A
USGS	12388700	2023-03-02	8030	A
USGS	12388700	2023-03-03	7360	A
USGS	12388700	2023-03-04	6550	A
USGS	12388700	2023-03-05	5600	A
USGS	12388700	2023-03-06	5060	A
USGS	12388700	2023-03-07	4720	A
USGS	12388700	2023-03-08	4690	A
USGS	12388700	2023-03-09	4670	A
USGS	12388700	2023-03-10	4700	A
USGS	12388700	2023-03-11	4720	A
USGS	12388700	2023-03-12	4690	A
USGS	12388700	2023-03-13	4700	A
USGS	12388700	2023-03-14	4830	A
USGS	12388700	2023-03-15	4970	A
USGS	12388700	2023-03-16	4880	A
USGS	12388700	2023-03-17	4870	A
USGS	12388700	2023-03-18	4860	A
USGS	12388700	2023-03-19	4860	A
USGS	12388700	2023-03-20	4890	A
USGS	12388700	2023-03-21	4900	A
USGS	12388700	2023-03-22	4890	A
USGS	12388700	2023-03-23	4900	A
USGS	12388700	2023-03-24	4930	A
USGS	12388700	2023-03-25	4890	A
USGS	12388700	2023-03-26	4880	A
USGS	12388700	2023-03-27	4860	A
USGS	12388700	2023-03-28	4860	A
USGS	12388700	2023-03-29	4860	A
USGS	12388700	2023-03-30	4880	A
USGS	12388700	2023-03-31	4960	A
USGS	12388700	2023-04-01	5270	A
USGS	12388700	2023-04-02	5520	A
USGS	12388700	2023-04-03	5500	A
USGS	12388700	2023-04-04	5400	A
USGS	12388700	2023-04-05	4860	A
USGS	12388700	2023-04-06	4710	A
USGS	12388700	2023-04-07	4470	A
USGS	12388700	2023-04-08	4370	A
USGS	12388700	2023-04-09	4370	A
USGS	12388700	2023-04-10	4390	P
USGS	12388700	2023-04-11	4520	P
USGS	12388700	2023-04-12	4550	P
USGS	12388700	2023-04-13	4570	P
USGS	12388700	2023-04-14	4500	P

USGS	12388700	2023-04-15	4470	P
USGS	12388700	2023-04-16	4470	P
USGS	12388700	2023-04-17	4460	P
USGS	12388700	2023-04-18	4540	P
USGS	12388700	2023-04-19	4520	P
USGS	12388700	2023-04-20	4460	P
USGS	12388700	2023-04-21	4440	P
USGS	12388700	2023-04-22	4560	P
USGS	12388700	2023-04-23	4630	P
USGS	12388700	2023-04-24	4690	P
USGS	12388700	2023-04-25	4820	P
USGS	12388700	2023-04-26	4920	P
USGS	12388700	2023-04-27	5010	P
USGS	12388700	2023-04-28	5200	P
USGS	12388700	2023-04-29	5350	P
USGS	12388700	2023-04-30	5610	P
USGS	12388700	2023-05-01	6070	P
USGS	12388700	2023-05-02	7220	P
USGS	12388700	2023-05-03	8590	P
USGS	12388700	2023-05-04	9760	P
USGS	12388700	2023-05-05	11100	P
USGS	12388700	2023-05-06	13000	P
USGS	12388700	2023-05-07	14900	P
USGS	12388700	2023-05-08	16400	P
USGS	12388700	2023-05-09	18300	P
USGS	12388700	2023-05-10	20500	P
USGS	12388700	2023-05-11	23300	P
USGS	12388700	2023-05-12	26000	P
USGS	12388700	2023-05-13	26000	P
USGS	12388700	2023-05-14	26000	P
USGS	12388700	2023-05-15	26300	P
USGS	12388700	2023-05-16	22700	P
USGS	12388700	2023-05-17	22700	P
USGS	12388700	2023-05-18	23100	P
USGS	12388700	2023-05-19	23300	P
USGS	12388700	2023-05-20	22700	P
USGS	12388700	2023-05-21	22500	P
USGS	12388700	2023-05-22	22700	P
USGS	12388700	2023-05-23	20600	P
USGS	12388700	2023-05-24	17800	P
USGS	12388700	2023-05-25	16500	P
USGS	12388700	2023-05-26	16000	P
USGS	12388700	2023-05-27	17700	P
USGS	12388700	2023-05-28	18000	P
USGS	12388700	2023-05-29	18000	P
USGS	12388700	2023-05-30	17900	P
USGS	12388700	2023-05-31	15900	P
USGS	12388700	2023-06-01	15000	P
USGS	12388700	2023-06-02	14600	P
USGS	12388700	2023-06-03	14300	P
USGS	12388700	2023-06-04	13700	P
USGS	12388700	2023-06-05	13600	P
USGS	12388700	2023-06-06	13500	P
USGS	12388700	2023-06-07	13400	P
USGS	12388700	2023-06-08	13400	P
USGS	12388700	2023-06-09	13500	P
USGS	12388700	2023-06-10	13600	P
USGS	12388700	2023-06-11	13700	P
USGS	12388700	2023-06-12	13700	P
USGS	12388700	2023-06-13	13700	P
USGS	12388700	2023-06-14	13700	P
USGS	12388700	2023-06-15	13600	P
USGS	12388700	2023-06-16	13800	P : e
USGS	12388700	2023-06-17	13600	P : e
USGS	12388700	2023-06-18	13500	P

USGS	12388700	2023-06-19	13500	P
USGS	12388700	2023-06-20	13600	P
USGS	12388700	2023-06-21	13400	P
USGS	12388700	2023-06-22	13100	P
USGS	12388700	2023-06-23	13000	P
USGS	12388700	2023-06-24	13000	P
USGS	12388700	2023-06-25	13000	P